



Labyrinth Network Northwest News

2009 TLS International Gathering October 8-10, 2009
Including Pre- and Post Gathering Events October 7 - 11, 2009
McMenamins Edgefield, Troutdale, Oregon

Let's Go Labyrinth Shopping - TLS Marketplace

By Rita Caroni



I WOULD LOVE TO TAKE THIS OPPORTUNITY TO INVITE EVERYONE TO COME ON OVER TO THE LABYRINTH SOCIETY'S 2009 INTERNATIONAL GATHERING OCTOBER 8-10 at McMennamins Edgefield in Troutdale, Oregon.

I HAVE BEEN ASSOCIATED WITH THE GATHERING SINCE THE YEAR 2000, AND EACH YEAR IT GETS BETTER AND BETTER. THIS YEAR WE ARE THRILLED TO BE COMING TO THE PORTLAND, OREGON AREA. WE WILL HAVE

VENDORS IN THE MARKET AREA WHO WILL BE COMING FROM ALL OVER TO PARTICIPATE AND SHARE THEIR ARTISTRY WITH US ALL. HANDCRAFTED TREASURES MANY WITH A LABYRINTH THEME, FINGER LABYRINTHS AND MUCH, MUCH MORE.

THERE WILL ALSO BE LABYRINTHS TO WALK, SO PLEASE COME AND SHARE WITH US. WE WOULD LOVE TO MEET MORE OF THE WONDERFUL PEOPLE IN OREGON.

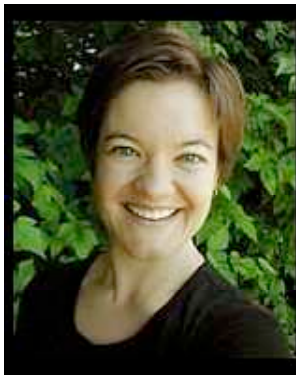


Creative Expression Room Everyone is invited and It's Free!!

By Melanie Weidner

You are invited to join in the fun at the International Labyrinth Gathering at Edgefield for this special event on Friday, October 9 at McMenamins Edgefield in Troutdale, Oregon. This event is a wonderful opportunity for you to explore the labyrinth in new ways under the guidance of Portland artist Melanie Weidner. The Creative Expression Room is free and open to the public.

Join us as we make creative space for Spirit in our room dedicated for personal exploration, creative expression, sacred play, and spiritual nourishment on Friday afternoon October 9, 12:45-5:15. Conference guests can deepen and integrate their experience, and members of the public can taste labyrinthic spirituality in a variety of experiential offerings including art collage, poetry and free-writing, labyrinth movement. Come also enjoy a feast of image, word, and labyrinth resources. Drop by between workshops or stay all afternoon, hosted by artist and spiritual director Melanie Weidner of ListenForJoy.com.



Melanie Weidner is a Quaker [Artist](#) and [Spiritual Coach / Spiritual Director](#) whose contagious love for image, metaphor, poetry, and spiritual exploration create joyful and transformative openings for self-reflection. She engages wide audiences across the country with experiences of art and spiritual reflection, then circles back to her Oregon studio to pray and create.



Labyrinths on the Grounds at Edgefield Another Opportunity that's Free & Open to the Public

By Paula Hills



At every Gathering some of the surprises people look forward to are the many creative temporary labyrinths that conference goers construct for all to walk. These labyrinths will be installed around Edgefield and are one of the free activities available to the public.

In the Meadow, our main outdoor gathering space, there will be several labyrinths including a large double spiral, a 39' solar lit classical labyrinth with an 8' genesa crystal shape in the center. The genesa crystal, also known as a cuboctahedron, is significant for many fascinating reasons, including its representation of the shape following the third division of cells in all embryonic living organisms. This shape is said to act "as a model that can carry us from one learning experience to another, integrate the known, and probe into the unknown".

In keeping with one of our popular themes this year another labyrinth on the grounds at Edgefield will include the sacred geometry of the Mayan harmonic system and fourth dimensional time. This unique 13 circuit labyrinth will be the focus of Christiana Brinton's (LNN member) workshop at the Gathering, along with co-presenter Intiana.

Several smaller and creatively constructed labyrinths will be located in the yard of the Administrator's House at Edgefield. Look for the map of the grounds with labyrinth symbols showing the location of each labyrinth in your registration packet, or ask for the TLS Gathering map at the front desk.



Registration is Booming For International Labyrinth Gathering at Edgefield

By Paula Hills, Registrar

At this writing we have registrants from 26 different states and 5 countries. See the list at the end of this paragraph. We have 148 people registered in all with many people arriving early to enjoy Jim Buchanan's Wednesday. night presentation at the First Christian Church in downtown Portland.

The two tours, one of area labyrinths and the other a Columbia Gorge Tour, have been very popular additions to people's post-Gathering schedule. Both tours are a few souls short of full, so hurry and join the fun.

There's still space in Lea Goode-Harris' offering "Creating a Poetree Labyrinth to Express the Spirit of the Seasons" and Ronald Esquivel's workshop called "Feel the Energy of Sacred Geometry". The ever popular "Creating Your Personal Labyrinth" with Lisa Gidlow Moriarty and Kimberly Saward is almost full.

You can attend any of the pre and post gathering workshops for the price of their registration, without being a full conference attendee, provided there's space. Best to register for those early to ensure a spot.

Check your knowledge of state abbreviations. The following states are represented among conference goers.

OR, WA, CA, FL, ME, GA, MN, MO, RI, MD, NM, NJ, CO, NY, IN, PA, OK, CT, DE, IL, VA, WI, AZ, SC, IA, TX

The following countries are represented:

USA, Canada, UK, Costa Rica, New Zealand

